

S3-MS

Socket for 11-pin standard relay according to IEC 67-I-18b

Type	S3-MS 3-pole, 1 connection level Integrated retaining clip and labelling space Accepts plug-in modules M3-S in series with the coil
Rated current	10 A
Specifications	
Rated load	10 A / 250 V
Insulation	Test voltage V rms / 1 min
– All terminals/DIN rail	2,5 kV
– Terminal/terminal	2,5 kV
Cross-section of connecting wire	
– Single-wire	4 mm ² or 2 x 2,5 mm ²
– Multi-wire	22 - 14 AWG
Max. screw torque	1,2 Nm
Screw dimensions	M3, Pozzi, slot
Integrated retaining clip/plastic	for relay series C3
Labelling space	detachable
Connection label	1...11; DIN/EN
Mounting	DIN rail TS35 or mounting plate
Ambient temperature operation/storage	-40 (no ice)...60 °C / -40 ... 80 °C
BI Terminal for further applications	
Associated, plug-in 11-pin-MRC-Relais	C3-A, C3-G, C3-T, C3-X, C3-M, C3-R, C3-E, C3-N, C3-S
Suitable for holding the Relco coding ring For coding the relay and the socket.	

Accessories

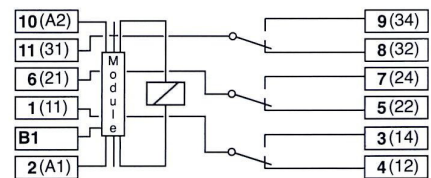
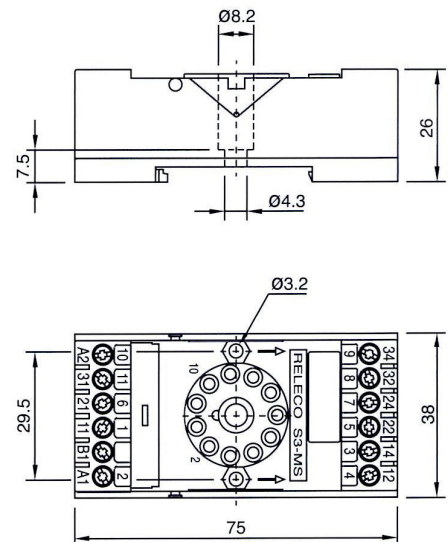
Coding ring, blue set:

Parallel module

Retaining spring, steel

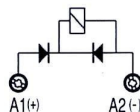
S3-BC

Packaging unit: 5 pcs

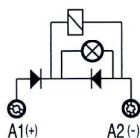
M3-S**S3-C, S3-CT** (with Timecube)**Connection diagram****Dimensions [mm]****M3S** Plug in modules for S3-MS

In series with the coil

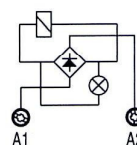
Free wheeling and polarity

M3S-FL / 12 ... 60 Vdc
M3S-FH / 12 ... 250 Vdc

Free wheeling, polarity and LED

M3S-FX / 24 Vdc
M3S-FX / 48 Vdc
M3S-FX / 110 ... 125 Vdc
M3S-FX / 200 ... 230 Vdc

Rectifier bridge and LED

M3S-B / 12 ... 48 Vac/dc
M3S-BX / 12 Vac/dc
M3S-BX / 24 Vac/dc
M3S-BX / 48 Vac/dc**Technical approvals, conformities**

EN 60947-1, EN 61810-1